

Kaitlyn Krolkowski, MPH  
Network Director  
Purchase Area Health Connections  
Purchase District Health Department  
[www.purchasehealthconnections.com](http://www.purchasehealthconnections.com)



Two largest  
initiatives

Transitional Care  
Team

Opioid Taskforce

# Diagnosis

COPD

PN

Stoke

HF

CABG

Total Joint (Hip and Knee)

AMI

Sepsis

# Counties

Ballard

Calloway

Carlisle

Graves

Fulton

Hickman

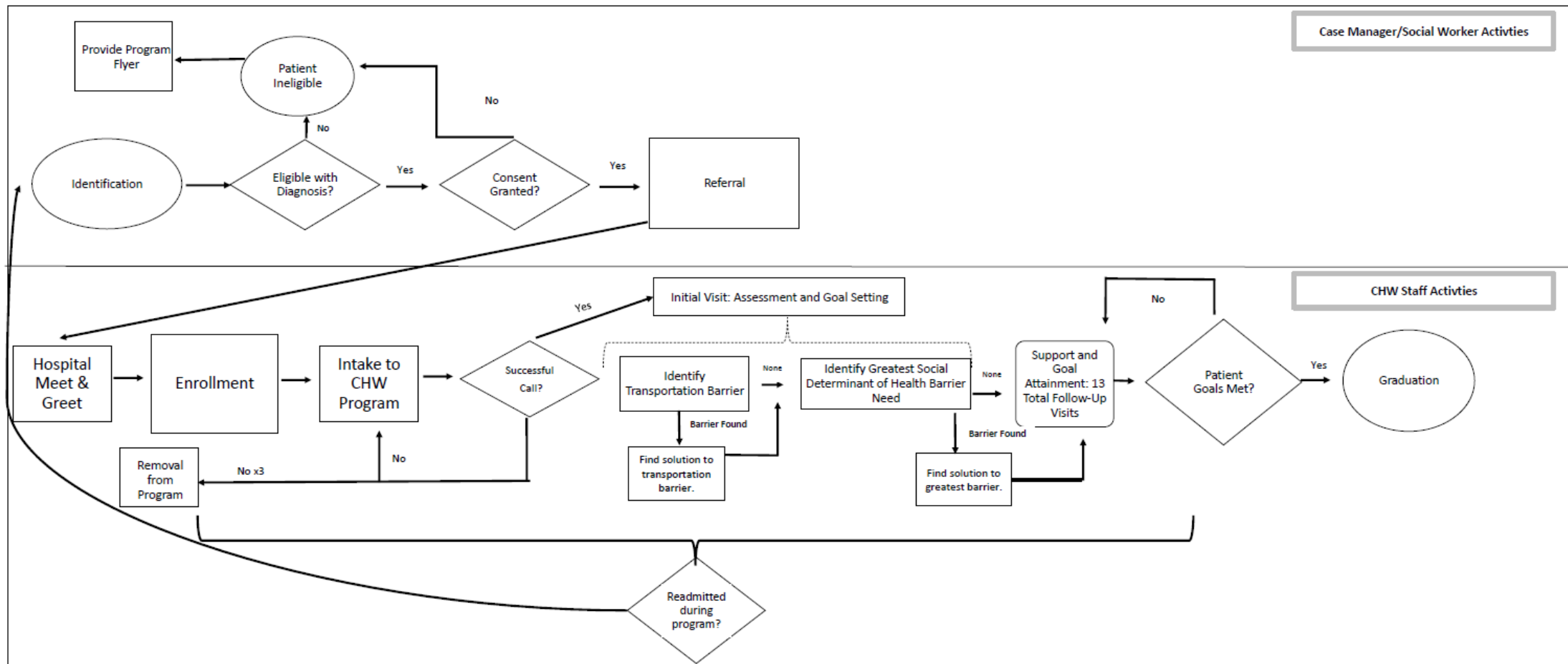
McCracken

Marshall

# Program Background

- ▶ 4 hospitals in WKY
- ▶ May, 2018-Present
- ▶ Total Referrals 1466
- ▶ Total Enrollments 918
- ▶ Referrals were steadily increasing prior to COVID-19, saw dramatic decrease at that time
- ▶ Funded through HRSA

This program is supported by the Health Resources and Services Administration (HRSA) of the U.S. Department of Health and Human Services (HHS) as part of an award totaling \$1,500,000 with 0% financed with non-governmental sources. The contents are those of the author(s) and do not necessarily represent the official views of, nor an endorsement, by HRSA, HHS, or the U.S. Government. For more information, please visit [HRSA.gov](https://www.hrsa.gov).



# Social Determinants of Health



Health and Health Outcomes

Social Needs  
and Barriers



# Sharing Information





# Bridging the Gap



Thank you!

Contacts:

Kaitlyn Krolkowski

[kkrolkowski@purchasehealth.org](mailto:kkrolkowski@purchasehealth.org)

Kaylene Cornell

[kaylenes.cornell@ky.gov](mailto:kaylenes.cornell@ky.gov)

